

Patient Information Leaflet

This leaflet is designed to answer common questions about ProSource Jelly. If you have any other questions, please refer to your dietitian or GP.

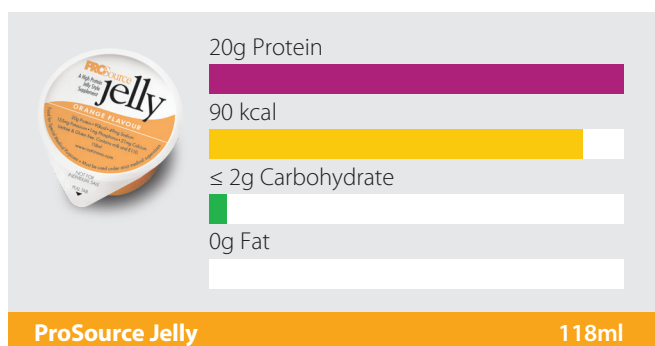
A bit about ProSource Jelly

ProSource Jelly is a high protein, jelly style supplement that can help to increase your protein intake.

ProSource Jelly is lactose and gluten free, it contains **milk**.

ProSource Jelly contains pork derivatives and may therefore not be suitable for vegetarians.

Each cup contains:



What flavours are available?

ProSource Jelly is available in Orange, Blackcurrant, Fruit Punch and Lime flavours.

How many cups should I take?

Your dietitian or GP will advise you on how many cups you should take.

How should ProSource Jelly be stored?

You should store ProSource Jelly unopened at room temperature (not exceeding 25°C).

Once opened, consume immediately or store in a refrigerator and consume within 24 hours.

Once opened, good food safety and storage practices should always be followed.

The expiry date can be located on the side of the cup.

How do I get hold of ProSource Jelly?

The healthcare professional who recommended the product for you will be able to advise you on how to get a further supply of ProSource Jelly if it is required.

Further information is available at [nutrinovo.com/patient-resources](https://www.nutrinovo.com/patient-resources)

How to take ProSource Jelly?

ProSource Jelly is ready-to-eat and can be consumed directly from the cup.

ProSource Jelly is best served chilled.

ProSource Jelly can be served with other foods such as:

- Ice cream
- Natural yogurt
- Cream
- Custard

Please check with your healthcare professional that these suggestions are suitable for you.

The information in this leaflet is intended for patients who have been recommended ProSource Jelly by a Healthcare Professional.

ProSource Jelly is a Food for Special Medical Purposes for the dietary management of hypoproteinaemia and must be used under medical supervision.

Can I recycle the packaging?



ProSource Jelly cups and the outer box can be widely recycled at home via household curb-side collections.

The foil lids used to seal cups of ProSource Jelly can also be recycled. It is recommended that these are rinsed and then scrunched together with any other aluminium lids or kitchen foil.

For more information visit [nutrinovo.com/sustainability](https://www.nutrinovo.com/sustainability)



Further information is available at [nutrinovo.com/patient-resources](https://www.nutrinovo.com/patient-resources) or by calling 01249 691301