

Patient Information Leaflet

This leaflet is designed to answer common questions about ProSource TF. If you have any other questions, please refer to your dietitian or GP.

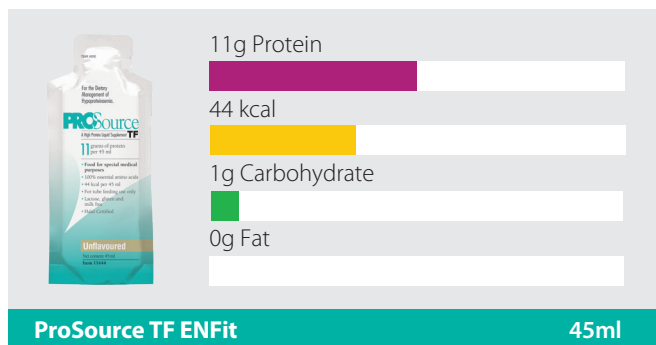
A bit about ProSource TF

ProSource TF is a low volume, high protein supplement that can help to increase your protein intake via your enteral feeding tube.

ProSource TF is milk, lactose and gluten free, and is Halal certified.

ProSource TF contains beef derivatives and may therefore not be suitable for vegetarians.

Each sachet contains:



How many sachets should I take?

Your dietitian will advise you on how many sachets you should take.

How should ProSource TF be stored?

You should store ProSource TF unopened at room temperature (not exceeding 25°C).

Once opened, use immediately.

The expiry date can be located on the bottom of each sachet.

How do I get hold of ProSource TF?

The healthcare professional who recommended the product for you will be able to advise you on how to get a further supply of ProSource TF if it is required.

ProSource TF will usually be delivered with your enteral feed delivery.

Further information is available at [nutrinovo.com/patient-resources](https://www.nutrinovo.com/patient-resources)

How to use ProSource TF?

ProSource TF is for use via an enteral feeding tube.

Administer ProSource TF via your enteral feeding tube using an enteral syringe.

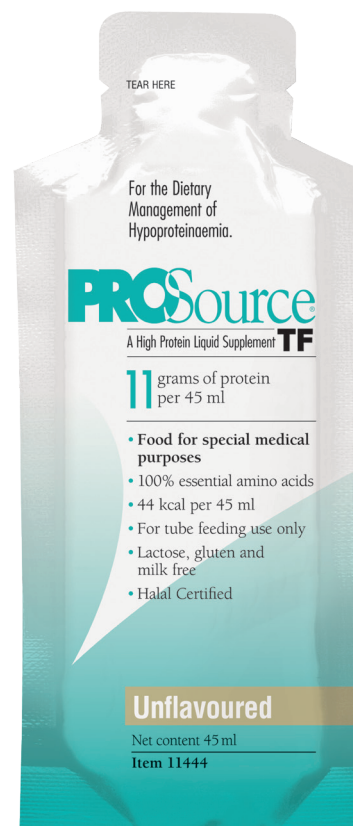
You should flush your feeding tube before and after administering ProSource TF.

ProSource TF does not need to be diluted for administration, and should be administered on its own and not mixed in with other feeds.

The information in this leaflet provides general guidance only. Your dietitian will provide more specific instructions on how to administer ProSource TF via your enteral feeding tube.

The information in this leaflet is intended for patients who have been recommended ProSource TF by a Healthcare Professional.

ProSource TF is a Food for Special Medical Purposes for the dietary management of hypoproteinaemia and must be used under medical supervision.



Can I recycle the packaging?

The sachets can be recycled at a wide range of "soft plastic" recycling points. Please visit [recyclenow.com/recycling-locator](https://www.recyclenow.com/recycling-locator) to find your local recycling point.

The cardboard carrier box is widely recyclable, whilst the plastic bag used to retain sachets can also be recycled as a "soft plastic".

For more information visit [nutrinovo.com/sustainability](https://www.nutrinovo.com/sustainability)



Further information is available at [nutrinovo.com/patient-resources](https://www.nutrinovo.com/patient-resources) or by calling 01249 691301