

How to use ProSource 20?

ProSource 20 can be taken orally or administered via an enteral feeding tube. Shake before use.

Oral use

ProSource 20 can be taken straight from the cup, or added to hot or cold, foods or drinks, if preferred.

When adding ProSource products into other foods or drinks, good food safety and storage practices should always be followed.

Enteral tube feeding

Administer ProSource 20 via your enteral feeding tube using an enteral syringe.

You should flush your feeding tube with water before and after administering ProSource 20.

ProSource 20 does not need to be diluted for administration, and should be administered on its own and not mixed in with other feeds.

The information in this leaflet provides general guidance only. Your dietitian will provide more specific instructions on how to administer ProSource 20 via your enteral feeding tube.

The information in this leaflet is intended for patients who have been recommended ProSource 20 by a Healthcare Professional.

ProSource 20 is a Food for Special Medical Purposes for the dietary management of hypoproteinaemia and must be used under medical supervision.

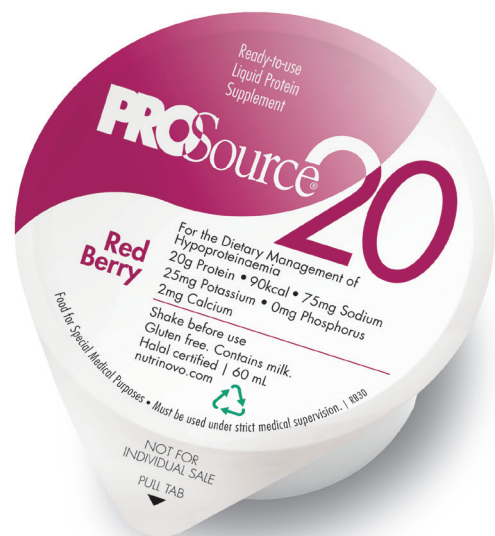
Can I recycle the packaging?



ProSource 20 packaging materials (outer box & cup) are recyclable and are widely accepted in household recyclable waste collection.

The foil lid used to seal cups of ProSource 20 can also be recycled. It is recommended that these are rinsed then scrunched together with any other aluminium lids or kitchen foil.

For more information visit [nutrinovo.com/sustainability](https://www.nutrinovo.com/sustainability)



Further information is available at [nutrinovo.com/patient-resources](https://www.nutrinovo.com/patient-resources) or by calling 01249 691301

Patient Information Leaflet

This leaflet is designed to answer common questions about ProSource 20. If you have any other questions, please refer to your dietitian or GP.

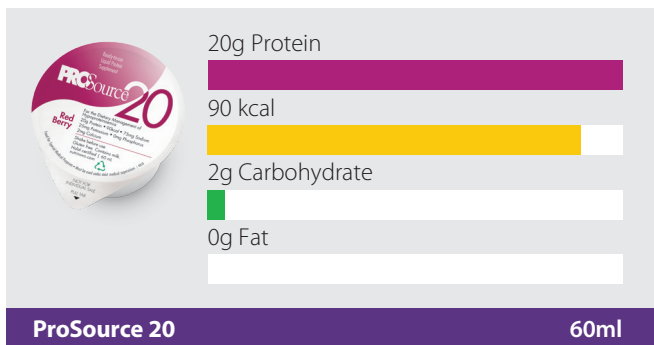
A bit about ProSource 20

ProSource 20 is a low volume, high protein supplement that can help to increase your protein intake.

ProSource 20 contains **milk**, it is gluten free and is Halal certified.

ProSource 20 contains beef derivatives and may therefore not be suitable for vegetarians.

Each cup contains:



What flavours are available?

ProSource 20 is available in Red Berry flavour.

How many cups should I take?

Your dietitian or GP will advise you on how many cups you should take.

How should ProSource 20 be stored?

You should store ProSource 20 unopened at room temperature (not exceeding 25°C). ProSource 20 can be served chilled for oral consumption if preferred.

Once opened, consume immediately.

The expiry date can be located on the side of the cup.

How do I get hold of ProSource 20?

The healthcare professional who recommended the product for you will be able to advise you on how to get a further supply of ProSource 20 if it is required.

Further information is available at [nutrinovo.com/patient-resources](https://www.nutrinovo.com/patient-resources)