

# Patient Information Leaflet

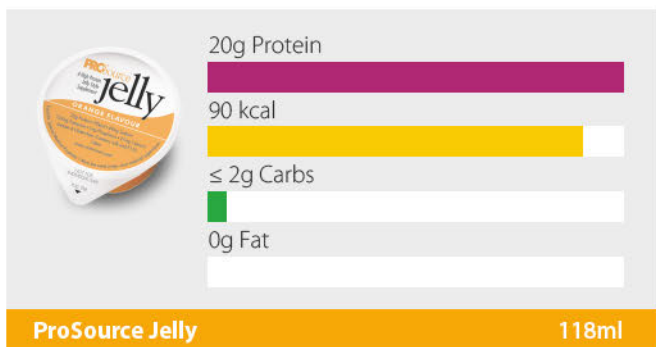
This leaflet is designed to answer common questions about ProSource Jelly. If you have any other questions, please refer to your dietitian or GP.

## A bit about ProSource Jelly...

ProSource Jelly is a high protein, jelly style supplement that will increase your protein intake.

ProSource Jelly is lactose and gluten free, contains milk.

ProSource Jelly contains pork derivatives and is not suitable for vegetarians.



## What flavours are available?

ProSource Jelly is available in 4 flavours – Orange, Blackcurrant, Fruit Punch and Lime.

## How many cups should I take?

Your dietitian or GP will advise you on how many cups you should take.

## How should ProSource Jelly be stored?

You should store ProSource Jelly at room temperature (not exceeding 25°C). Once a cup is opened, either consume immediately or store in the fridge and consume within 24 hours.

The expiry date can be located on the side of the cup.

## How to get hold of ProSource Jelly?

ProSource Jelly will usually be recommended by your dietitian and prescribed by your GP.

ProSource Jelly is available from your local retail pharmacy. If the pharmacy does not have it in stock, they should be able to order it in for you within 48 hours.

Further information is available at [nutrinovo.com/patient-resources](http://nutrinovo.com/patient-resources)

# ProSource jelly

## How to take ProSource Jelly?

ProSource Jelly is ready-to-eat and can be consumed directly from the pot.

ProSource Jelly is best served chilled.

## Usage with Food\*

ProSource Jelly can be served with other foods such as:

- Ice cream
- Plain yogurt
- Cream
- Custard

ProSource Jelly can also be used in place of jam or marmalade and spread on toast, crumpets or scones.

\* Please check with your dietitian if these options are suitable for you.



## Can I recycle the packaging?

ProSource Jelly cups and the outer box can be widely recycled at home via household curb-side collections.

The foil lids used to seal cups of ProSource Jelly can also be recycled. It is recommended that these are rinsed and then scrunched together with any other aluminium lids or kitchen foil.

For more information visit [nutrinovo.com/sustainability](http://nutrinovo.com/sustainability)



Further information is available at [www.nutrinovo.com](http://www.nutrinovo.com)  
or by calling **01249 691301**

**nutrinovo**

Nutrinovo Limited | Hartham Park, Corsham, Wiltshire SN13 0RP | +44 (0)1249 691301  
[www.nutrinovo.com](http://www.nutrinovo.com)