

Patient Information Leaflet

This leaflet is designed to answer common questions about ProSource TF ENFit. If you have any other questions, please refer to your dietitian or GP.

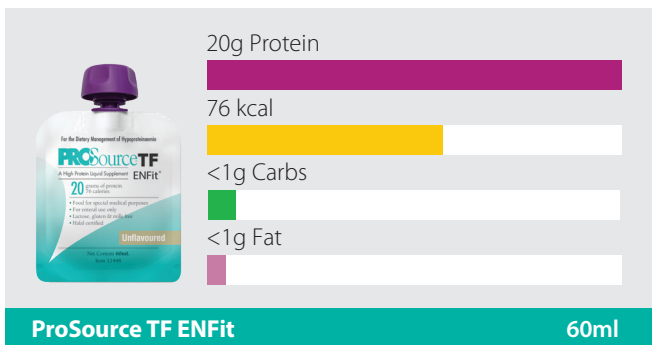
A bit about ProSource TF ENFit

ProSource TF ENFit is a low volume, high protein supplement that can be connected directly to your enteral feeding tube.

ProSource TF ENFit is milk, lactose and gluten free, and is Halal certified.

ProSource TF ENFit contains beef derivatives and may therefore not be suitable for vegetarians.

Each pouch contains:



How should ProSource TF ENFit be stored?

You should store ProSource TF ENFit unopened at room temperature (not exceeding 25°C).

Once opened, use immediately.

The expiry date can be located on the back of each pouch.

How do I get hold of ProSource TF ENFit?

ProSource TF ENFit will usually be delivered with your enteral feed delivery.

How many pouches should I take?

Your dietitian will advise you on how many pouches of ProSource TF ENFit you should take.

Further information is available at [nutrinovo.com/patient-resources](https://www.nutrinovo.com/patient-resources)

Guidance for enteral use

To administer ProSource TF ENFit, directly connect the pouch to your enteral feeding tube, then squeeze the pouch until empty. ProSource TF ENFit can also be decanted and administered via an enteral feeding syringe if preferred.

ProSource TF ENFit does not need to be diluted for administration via an enteral feeding tube.

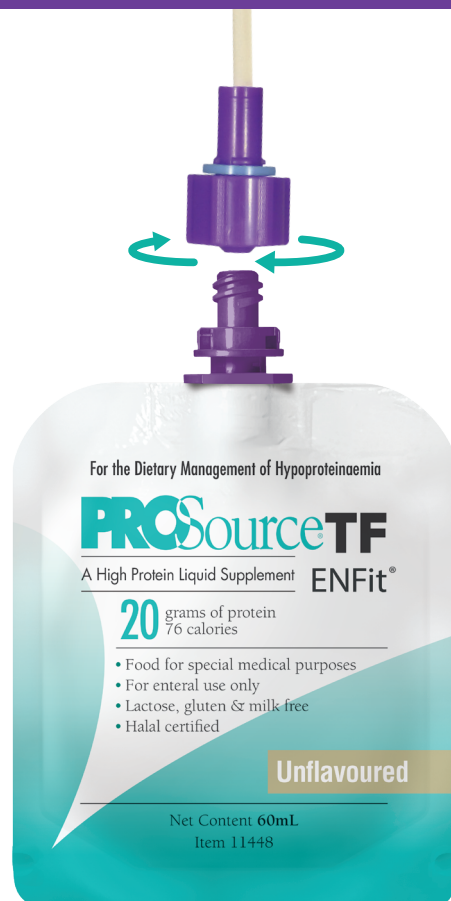
You should flush your feeding tube before and after administering ProSource TF ENFit.

ProSource TF ENFit should be administered on its own and should not be mixed in with other feeds.

The information in this leaflet provides general guidance only. Your dietitian will provide more specific instructions on how to administer ProSource TF ENFit via your enteral feeding tube.

The information in this leaflet is intended for patients who have been recommended ProSource TF ENFit by a Healthcare Professional.

ProSource TF ENFit is a Food for Special Medical Purposes for the dietary management of hypoproteinaemia and must be used under medical supervision.



Can I recycle the packaging?

The sachets can be recycled at a wide range of “soft plastic” recycling points. Please visit [recyclenow.com/recycling-locator](https://www.recyclenow.com/recycling-locator) to find your local recycling point.

The cardboard carrier box is widely recyclable, whilst the plastic bag used to retain sachets can also be recycled as a “soft plastic”.

For more information visit [nutrinovo.com/sustainability](https://www.nutrinovo.com/sustainability)

Further information is available at www.nutrinovo.com
or by calling 01249 691301