

Patient Information Leaflet

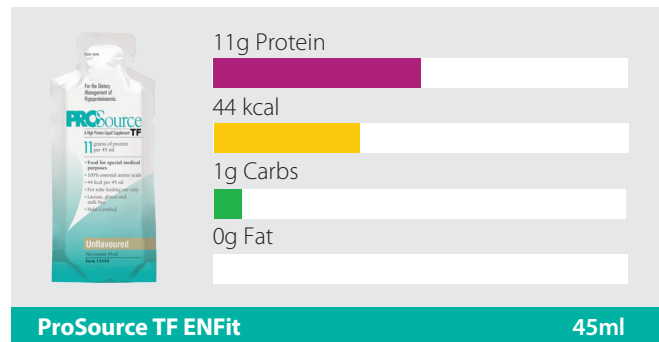
This leaflet is designed to answer common questions about ProSource TF. If you have any other questions, please refer to your dietitian or GP.

A bit about ProSource TF

ProSource TF is a low volume, high protein supplement that can increase your protein intake via your enteral feeding tube.

ProSource TF is free from milk, lactose and gluten, and is Halal certified.

ProSource TF contains beef derivatives and may therefore not be suitable for vegetarians.



How should ProSource TF be stored?

You should store ProSource TF unopened at room temperature (not exceeding 25°C). Once opened, use immediately. The expiry date can be located on the bottom of each sachet.

How do I get hold of ProSource TF?

ProSource TF will usually be delivered with your enteral feed delivery.

How many sachets should I take?

Your dietitian will advise you on how many sachets of ProSource TF you should take.

Further information is available at [nutrino.com/patient-resources](https://www.nutrino.com/patient-resources)

Guidance for enteral use

Administer ProSource TF via your enteral feeding tube using an enteral feeding syringe.

ProSource TF has a consistency similar to water, therefore it does not need to be diluted for administration via an enteral feeding tube and is unlikely to cause tube blockages.

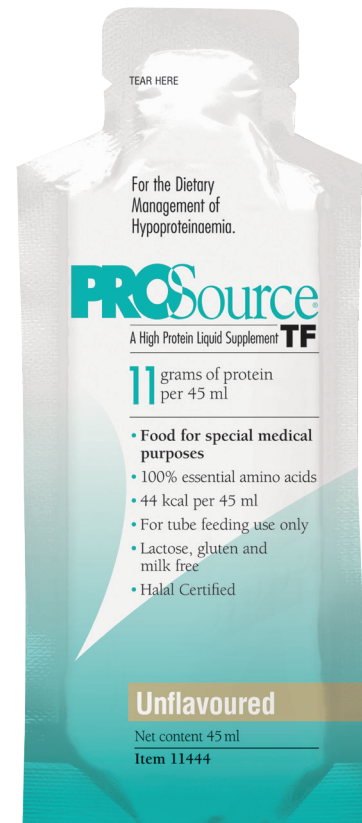
We recommend flushing your feeding tube before and after administering ProSource TF.

ProSource TF should be administered on its own and should not be mixed in with other feeds.

The information in this leaflet provides general guidance only. Your dietitian will provide more detailed instructions on how you should take ProSource TF.

The information in this leaflet is intended for patients who have been recommended ProSource TF by a Healthcare Professional.

ProSource TF is a Food for Special Medical Purposes for the dietary management of hypoproteinaemia and must be used under medical supervision.



Can I recycle the packaging?

The sachets can be recycled at a wide range of "soft plastic" recycling points. Please visit [recyclenow.com/recycling-locator](https://www.recyclenow.com/recycling-locator) to find your local recycling point.

The cardboard carrier box is widely recyclable, whilst the plastic bag used to retain sachets can also be recycled as a "soft plastic".

For more information visit [nutrinovo.com/sustainability](https://www.nutrinovo.com/sustainability)

Further information is available at www.nutrinovo.com
or by calling 01249 691301