

# Patient Information Leaflet

This leaflet is designed to answer common questions about ProSource TF Plant. If you have any other questions, please refer to your dietitian or GP.

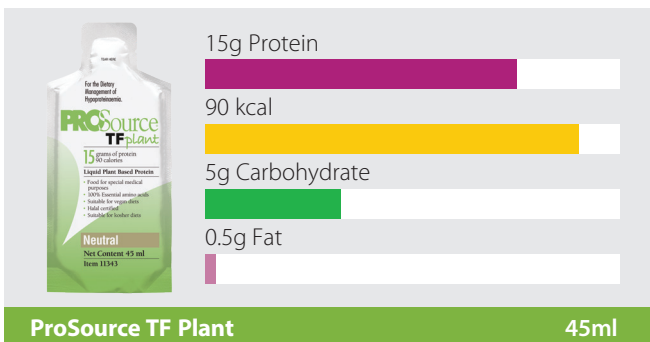
## A bit about ProSource TF Plant

ProSource TF Plant is a low volume, high protein, plant based supplement that can help to increase your protein intake via your enteral feeding tube.

ProSource TF Plant is milk, lactose and gluten free.

ProSource TF Plant is suitable for vegetarian and vegan diets.

## Each sachet contains:



## How many sachets should I take?

Your dietitian will advise you on how many sachets you should take.

## How should ProSource TF Plant be stored?

You should store ProSource TF Plant unopened at room temperature (not exceeding 25°C).

Once opened, use immediately.

The expiry date can be located on the bottom of each sachet.

## How do I get hold of ProSource TF Plant?

The healthcare professional who recommended the product for you will be able to advise you on how to get a further supply of ProSource TF Plant if it is required.

ProSource TF Plant will usually be delivered with your enteral feed delivery.

Further information is available at [nutrinovo.com/patient-resources](https://www.nutrinovo.com/patient-resources)

## How to use ProSource TF Plant?

ProSource TF Plant is for use via an enteral feeding tube.

Administer ProSource TF Plant via your enteral feeding tube using an enteral syringe.

You should flush your feeding tube before and after administering ProSource TF Plant.

ProSource TF Plant does not need to be diluted for administration, and should be administered on its own and not mixed in with other feeds.

**The information in this leaflet provides general guidance only. Your dietitian will provide more specific instructions on how to administer ProSource TF Plant via your enteral feeding tube.**

## Oral use

Although ProSource TF Plant is designed for enteral tube feeding, it can be taken orally if this has been recommended by your healthcare professional.

If taking ProSource TF Plant orally, it is recommended to mix it into foods or drinks with a strong flavour, such as ginger beer. Please check with your healthcare professional that this suggestion is suitable for you.

When adding ProSource products into other foods or drinks, good food safety and storage practices should always be followed.

## Can I recycle the packaging?



The sachets can be recycled at a wide range of “soft plastic” recycling points. Please visit [recyclenow.com/recycling-locator](https://www.recyclenow.com/recycling-locator) to find your local recycling point.

The cardboard carrier box is widely recyclable, whilst the plastic bag used to retain sachets can also be recycled as a “soft plastic”.

For more information visit [nutrinovo.com/sustainability](https://www.nutrinovo.com/sustainability)

**The information in this leaflet is intended for patients who have been recommended ProSource TF Plant by a Healthcare Professional.**

ProSource TF Plant is a Food for Special Medical Purposes for the dietary management of hypoproteinaemia and must be used under medical supervision.



Further information is available at [nutrinovo.com/patient-resources](https://www.nutrinovo.com/patient-resources) or by calling 01249 691301